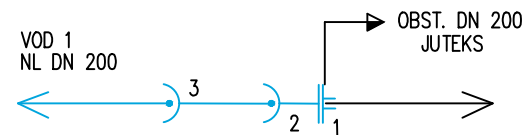


MONTAŽNI NAČRT VOZLIŠČ VODOVODA – VOD 1

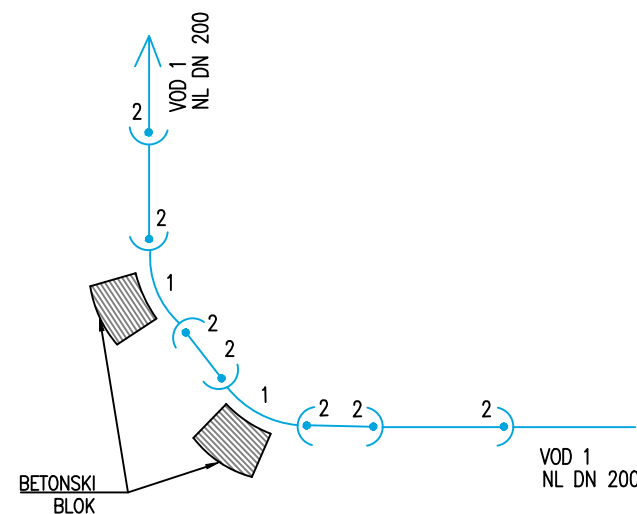
V1.1



1. MJ DN 200
2. EU DN 200 TYTON
3. VI TESNILO DN 200

KD 1
KD 1
kd 2

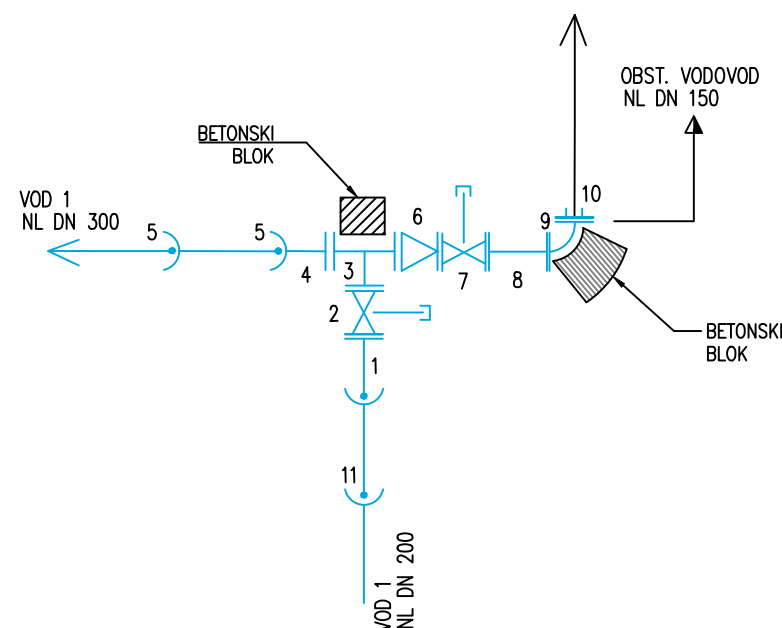
V1.2



1. MMK 45° DN 200 TYTON
2. VI TESNILO DN 200 TYTON

KD 2
KD 7

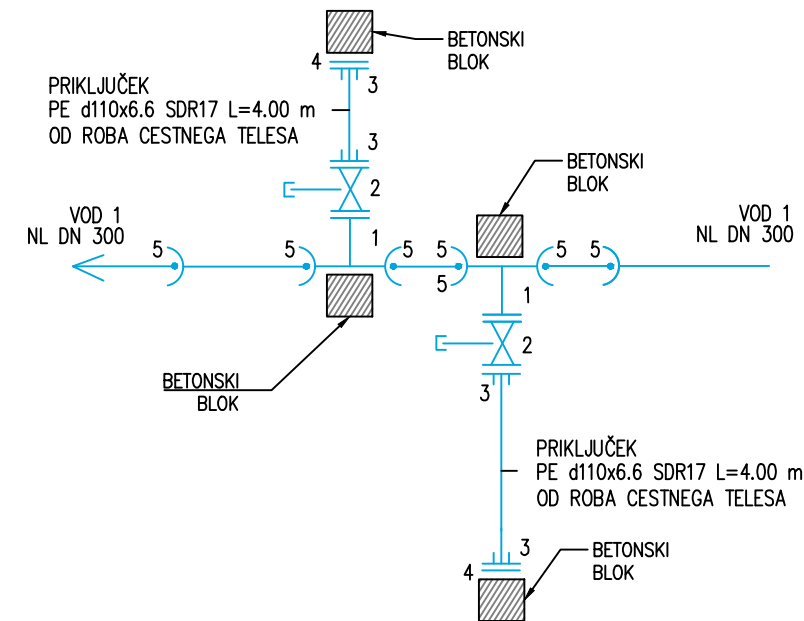
V1.3



1. F KOS DN 200 TYTON
2. EV ZASUN DN 200 Z VGRADNO GARNITURO IN CESTNO KAPO
3. T KOS DN 300/DN 200
4. EU KOS DN 300 TYTON
5. VI TESNILO DN 300 TYTON
6. FFR DN 300/DN 150
7. EV ZASUN DN 150 Z VGRADNO GARNITURO IN CESTNO KAPO
8. FF DN 150 – dolžino prilagoditi
9. Q KOS DN 150
10. MJ DN 150
11. VI TESNILO DN 200 TYTON

KD 1
KD 1
KD 1
KD 1
KD 2
KD 1
KD 1
KD 1
kd 1
KD 2

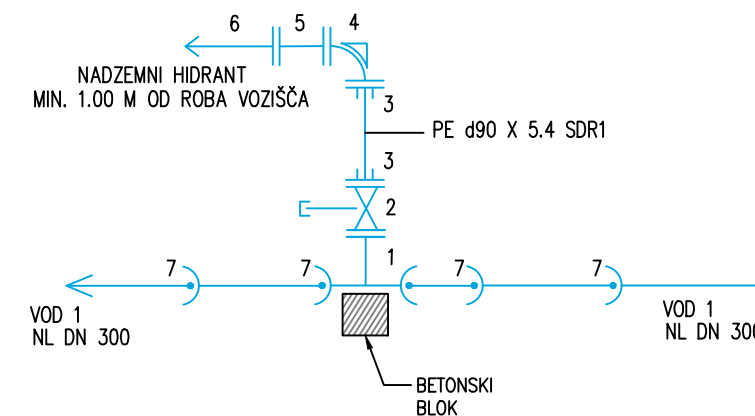
V1.4



1. MMA KOS DN 300/DN 100 TYTON
2. EV ZASUN DN 100 Z VGRADNO GARNITURO IN CESTNO KAPO
3. MJ DN 100/d110
4. X KOS DN 100
5. VI TESNILO DN 300 TYTON

KD 2
KD 2
KD 4
KD 2
KD 7

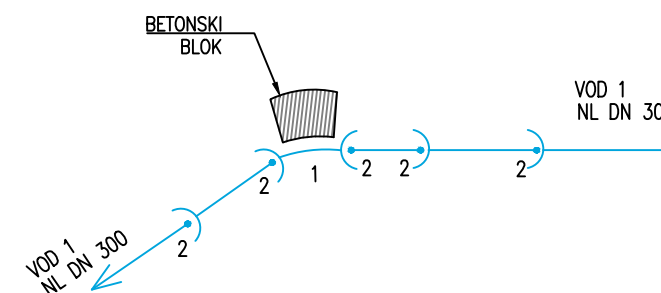
V1.5



1. MMA KOS DN300/DN 80
2. EV ZASUN DN 80 Z VGRADNO GARNITURO IN CESTNO KAPO
3. MJ DN 80/d90
4. QN KOS DN 80
5. FF KOS DN 80, L=200 mm
6. NADZEMNI HIDRANT DN 80 INOX
7. VI TESNILO DN 100 TYTON

KD 1
KD 1
KD 2
KD 1
kd 1
KD 1
KD 5

V1.6



1. MMK 45° DN 300 TYTON
2. VI TESNILO DN 300 TYTON

KD 1
KD 5

IZRAČUN BETONSKIH BLOKOV – GLEJ PRILOGO
VSA ARMATURA IN FAZONSKI KOMADI SO PN 16